



Multilin D400™

Advanced Substation Gateway

KEY BENEFITS

- Direct support for industry standard communication protocols (including IEC® 61850) helps ensure connectivity with new and legacy substation devices and master stations
- Reduce configuration and maintenance effort using the intuitive configuration interface with drop down menus, easy-to-use workflows, pre-configured device maps, built-in HMI and built-in substation automation applications
- Integrate the Multilin D400 Substation Gateway into NERC® CIP compliant systems using the built-in advanced security features
- Cost effective deployment of new and retrofit substation automation projects with the compatible, proven technology of the Multilin D20 Input/Output peripheral modules
- Improve operation processes allowing personnel to securely access substation devices remotely
- Simplify event analysis and system planning with fast access to non-operational data, such as fault records, sequence of events, settings files, which is automatically collected and distributed by the Multilin D400 for use by different groups within the utility

APPLICATIONS

- Advanced gateway: substation data collection, concentration, visualization and trending
- Advanced automation: implement custom substation logic and procedures using IEC 61131 compliant tools
- Automate non-operational data management collecting files from IEDs and distributing to user defined locations for archiving and use by different user groups within the utility
- Cost effective deployment of new and retrofit substation automation projects through compatibility of Multilin D400 Substation Gateways and Multilin D20 Input/Output peripheral modules enabling users who have standardized on the D20 to maintain and leverage existing designs, processes and infrastructure
- Securely access substation devices locally and remotely

FEATURES

Advanced Automation

- Built-in alarm annunciator
- Built-in one line diagrams editor
- IEC 61131 soft logic using Logixlinx™
- Analog/digital data logging with web-based viewer and .CSV file export

Security

- Centralized user authentication (RADIUS®, TACACS+®)
- Role Based Access Control (RBAC)
- Full auditing including syslog
- Secure access using SSH/SCP/HTTPS
- Secure web server (128 bit encryption)
- Built-in firewall

Connectivity

- Multiple simultaneous SCADA protocols and firmware including DNP3, Modbus, IEC 101 Server, IEC 103 Client, Calculator, and System Point Manager
- Event notification via email/pager
- Automatic record retrieval application for archiving and transfer of IED files (SOE, Fault Records)
- Support for up to 16 RS232/RS485 serial ports and up to 64 virtual serial ports
- Support for VLAN communications

Hardware

- Dual hot swappable power supplies
- RS485 2kV RMS rated ports
- Built-in Ethernet switch (10/100Base T or 100Base FX)
- Dual Ethernet controllers option
- Optional Multilin D.20™ RIO Distributed I/O Controller external interface module for communication with D20 I/O modules



imagination at work

Overview

GE's Multilin D400™ is a secure, hardened, advanced substation gateway that collects metering, status, event, and fault report data from serial or LAN based intelligent substation devices. The Multilin D400 summarizes data from the substation devices and makes it available locally /remotely through a standard secure web browser (HTTPS). It supports serial and/or LAN connections to SCADA masters. TCP/IP network connections are supported over the built-in Ethernet and the modem interface.



Advanced Gateway

The Multilin D400 collects data from substation protection, control, monitoring, RTU, and intelligent devices, pre-processes the data and moves it up to EMS and DMS SCADA systems providing centralized substation management. Gateway features include:

- Data collection, concentration and visualization
- IEC 61850 Gateway
- Device Redundancy
- Built in Media Conversion



Advanced Automation

The Multilin D400 provides the computing platform necessary to automate substation procedures, such that intricate processes are carried out safely and efficiently by creating custom automation programs using IEC 61131 compliant tools, and perform basic math functions on data points using the built-in calculator tool. Automation features include:

- HMI, One Line Viewer and Annunciator
- Mathematical Control Logic
- Programmable Logic using LogicLinx
- Accumulator Freeze
- Analog Value Selection
- Control Lockout
- Double Point Association
- Input Point Suppression
- Redundant I/O
- Alarm Management

Multilin D400 Applications

Enterprise Systems



The collected substation device data is pre-processed and moved up to EMS and DMS SCADA systems providing centralized management of substation switches and breakers.

Substation

D400



Applications:



Advanced Gateway



Advanced Automation



Fault Recording



Secure Remote Access



Device data collected from Protection, Control, Monitoring, RTU, and other intelligent equipment.



Fault Recording/Data Logging

Using pass-through connections, users can extract valuable non-operational data such as digital fault recording (DFR) records, event and oscillography* files. The user can also access the historical log files and upload the archived data for trending and analysis. Fault recording features include:

- Data Logger
- Trend Viewer
- Data Base Exporter



Secure Remote Access

The Multilin D400 allows maintenance and relay engineers to securely access substation devices, locally or remotely, through advanced visualization and communication tools, increasing productivity. Secure remote access features include:

- Access to Operational and Non-operational Data
- Pass-through/Terminal Server
- Role Based Access Control
- Virtual Serial Ports



Data Collection, Concentration and Visualization

The Multilin D400 advanced substation gateway, when operating as a SCADA host, collects, filters, and sorts data from a wide range of intelligent devices (RTUs, relays, meters) in the substation and preserves original data time stamp for accurate sequence of event. Data can be presented to multiple SCADA hosts. The D400 comes with a built-in suite of protocols and security applications to facilitate communication with various substation devices and SCADA hosts, including:

- DNP3 serial and TCP/IP (client & server)
- IEC 61850 (client)
- Modbus™ serial & TCP/IP (client & server)

- IEC60870-5-101/103/104 (client)
- IEC60870-5-101/104 (server)
- SELFast Meter/SEL ASCII
- Hydran™ Host*
- GE modem
- Generic ASCII protocols

IEC 61850 Gateway

The IEC 16850 Client application allows the Multilin D400 to act as a powerful IEC 61850 data concentrator. The D400 also includes valuable features such as Dynamic Data Sets, Buffered Control Blocks, and Enhanced Security Controls.

Device Redundancy

Dual Multilin D400 units can be deployed creating a redundant system where accumulators, SOE logs, and configurations are automatically synchronized between

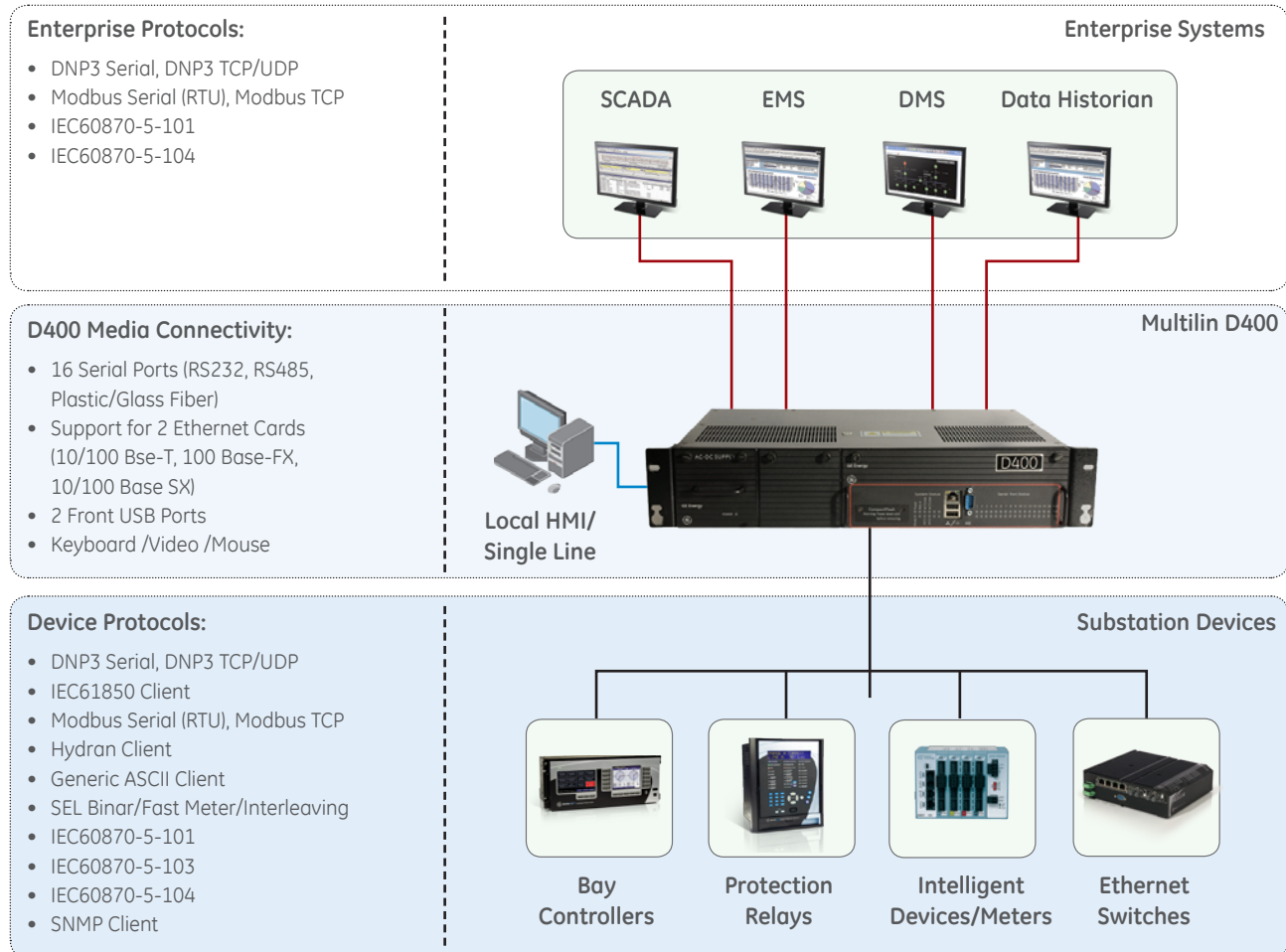
the two systems. Serial communication links are automatically switched between the units based on system health.

The D400 100Base-FX redundant Ethernet card enables automatic switchover between two sets of Ethernet switches ensuring there is no single point of failure in the system.

Built-in Media Conversion

The Multilin D400 supports various communication media types—Serial: RS-232, RS-485, Glass Fiber, and Plastic Fiber; and Ethernet: 10/100Base-T, 10Base-FL, and 100Base-FX. Hot swappable communications modules eliminate the need for dangle type media converters used to convert to glass or plastic fiber, reducing total cost of deployment.

Advanced Substation Gateway Connectivity





Advanced Automation

The Multilin D400 acts as the centralized, rugged computing platform in advanced automation systems. Using the calculator tool and/or GE's programmable logic (LogicLinx), users can create custom automation programs for a variety of applications such as:

- Sequence Switching
- Interlocking
- Auto-sectionalizing
- Auto-reclosing
- Load Tap Changer Control
- Cap. Bank Control
- Reactor Switching
- Alarm Grouping

HMI, One Line & Annunciator

The Multilin D400 supports a web based HMI/Annunciator feature, that is accessible using a standard Internet browser or through a VGA monitor and USB keyboard/mouse attached directly to the unit. Users have access to all data points in the systems, alarm screens, communications status screens and dynamic one line diagrams, all through the secure web interface.

Mathematical Control Logic

Using the calculator tool, users can create advanced solutions that group, manage and control points to produce the required automation results.

The calculator tool can perform mathematical, logical, or timer based operations on data points stored in the Multilin D400. Using a graphical interface, users can define logical expressions using mathematical functions such as; addition, multiplication, logarithm, greater than, less than, as well as other boolean functions.

Programmable Logic (LogicLinx)

For more advanced applications, programmable logic (LogicLinx) software provides PLC functionality on the D400 platform. LogicLinx offers textual and graphical languages defined in the IEC 61131-3 standard for PLC programming environments, including Sequential

Functions Chart, Instruction List, Structured Text, Ladder Diagram and Function Block Diagram. In addition, a wide range of arithmetic, boolean and logical operations are supported.

Accumulator Freeze

Define groups of accumulator points whose values are frozen periodically or on demand.

Analog Value Selection

Define a group of prioritized analog input points with the highest priority, valid input being reported to a single analog input point.

Control Lockout

The Control Lockout feature ensures that only a single master station can access a group of controls at one time, and can lock out groups of controls to allow for safer local maintenance. Users can create up to 8 remote control groups and up to 256 local control groups. Any digital output can be included in one remote and one local group.

Double Point

Associates two digital input points to form a double point indication. Also known as 4-state points.

Input Point Suppression

Suppress reporting of input points while they are unavailable during maintenance. This allows users to disable groups of analog and digital input points by ignoring their actual data and quality changes within selected applications. While points are suppressed, a predefined suppression value and the Point Suppressed quality flag are provided instead. This

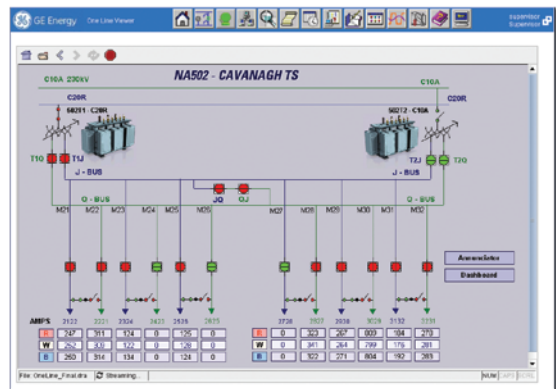
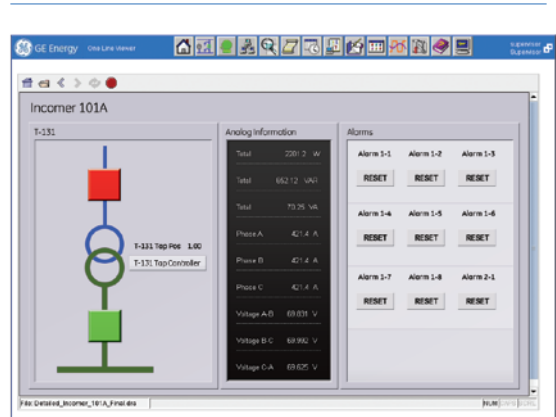
is useful during maintenance operations to prevent spurious OFFLINE alarms and false readings while devices are powered off or disconnected.

Redundant I/O

Specify a secondary data point for any point that is used to report the value and quality when the associated primary point is invalid or questionable.

Alarm Management

The D400 Alarm groups are user-definable, with up to 256 groups allowed. Each group has its own descriptive and display parameters. Alarms may belong to more than 1 group, or none at all. "Critical" and "Default" groups are built-in. SCADA points for the alarm groups remain on-line if component alarm points go offline. SCADA points are provided to acknowledge a group of alarms. Individual alarms must be acknowledged via the D400 GUI.



Web based HMI/Annunciator feature, that is accessible using a standard Internet browser or through a VGA monitor and USB keyboard/mouse attached directly to the unit.



Fault Recording / Data Logging

The Multilin D400 can automatically retrieve event and oscillography* files from devices such as Multilin UR Protective Relays, GE's D25 Controllers, and IEC 61850 server devices. Using IEEE file naming standards, these event files are renamed and can be stored locally or securely sent to corporate servers using Rsync (SSH).

Data Logger

The Analog Data Logger provides a variety of means to monitor and record analog input point value changes into data files that can be retrieved by the user. A variety of recording methodologies are supported including, Continuous (all changes), Periodic, Time Weighted, Out of Range and Triggered by a digital input point.

Trend Viewer

All data recorded by the Analog/Digital Data Logger can be viewed by the Digital event recorder using the built in web-based Trend Viewer. Users can select the range of data to be used by time and date, alternately a real time streaming view can be displayed. Up to 8 data points (pens) can be displayed on a single view and support for curve fitting is available.

Database Exporter

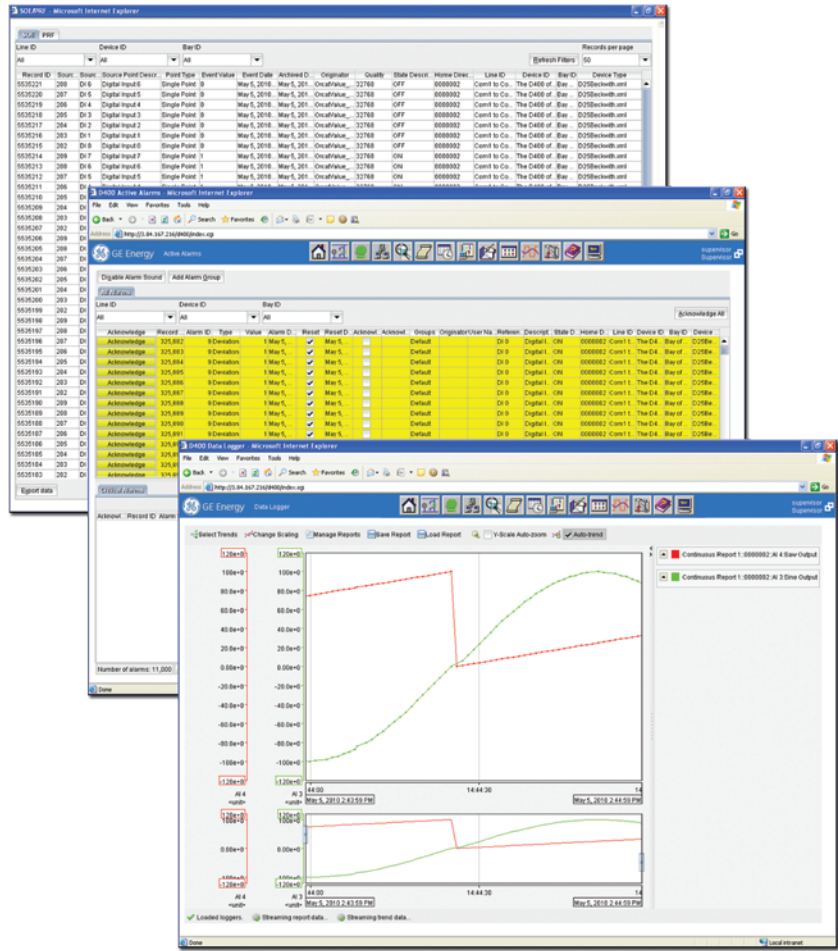
The Database Exporter tool allows users to save Analog Data Logger and Digital event recorder points from the Multilin D400 to your local PC, using the WEB interface, in comma-separated values (CSV) format.

Automatic Record Retrieval

The Automated Record Retrieval Manager (ARRM) retrieves and stores record files from devices connected to the D400.

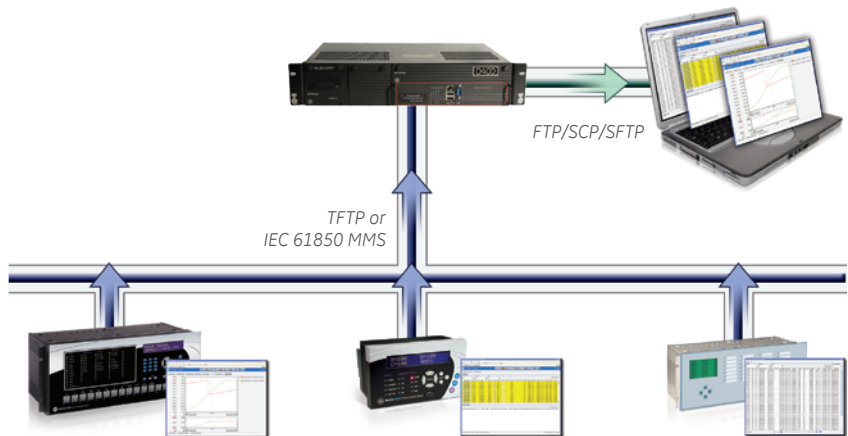
ARRM uses the Distributed Network Protocol (DNP) and the IEC 61850 protocol to communicate with a variety of devices, and uses the Trivial File Transfer Protocol (TFTP) or MMS to transmit the files from the IED to the device over a Local Area Network (LAN) or serial connection.

You can also retrieve downloaded records from the D400 using any FTP/SCP/SFTP client as needed or on a scheduled basis.



Multilin D400 Fault Recording

The D400 fault recording capability allows system event information to be collected and viewed using a web-based trend viewer.





Secure Remote Access

Multilin D400 provides robust security environment, providing seamless integration with existing IT department policies. Role based Access Control, Secure Web Interface, Secure File Transfer, and extensive user activity logging provide a complete security toolkit required to achieve NERC-CIP compliance.

Non-operational Data

Using pass-through connections, the utility user can extract valuable non-operational data such as digital fault recording (DFR) records and event files. The user can also access the historical log files and upload the archived data for trending and analysis.

Pass-through/Terminal Server

A built-in terminal server emulator allows pass-through connections to be initiated to substation device (relay, meter, RTU or other device). Once the connection is established, the local event records can be uploaded from the substation devices and viewed remotely.

Virtual Serial Ports

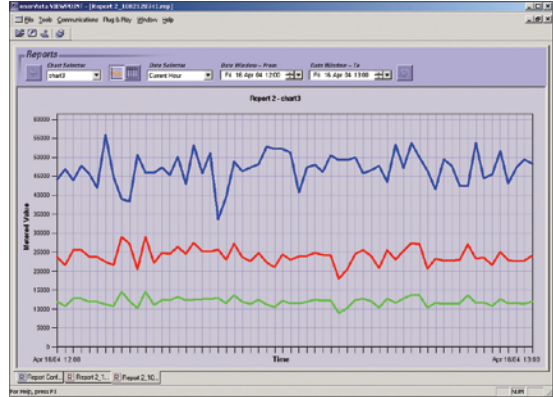
Virtual serial ports eliminate copper wire communications to feeder bays when a serial-only device is located in the bay. A small terminal server can be placed in the bay and connected to the Ethernet network, allowing all Multilin D400 serial client applications to connect directly to the serial device.

Role Based Access Control

Role Based Access Control is achieved using TACACS+, RADIUS or the D400's internal database; ensuring only authenticated and authorized users gain access the system. When using TACACS+ or RADIUS, revoking user privileges, system wide, is as simple as updating the centralized user database.

Network security protocols:

- HTTPS
- SSH
- SCP
- Syslog
- SFTP
- CHAP
- RADIUS
- TACACS+



Use device software to obtain non-operational data such as trending and event records through the D400's secure remote access functionality.

Built-in Firewall

Multilin D400 is equipped with a built-in firewall for enhanced gateway cyber security. D400's firewall is designed to drop unsolicited or invalid routed packages.

The firewall is preconfigured to block outbound traffic on external interfaces and inbound traffic on both internal and external interfaces. The D400 automatically generates rules allowing inbound traffic on internal interfaces for all configured services. The rules are user configurable for inbound/outbound traffic customization.

Secure Remote Access

Engineering Systems



Multilin D400 Advanced Substation Gateway provides substation hardened processing platform for secure data & device access:

- SCADA data concentrator
- Device configuration tools
- Remote device access
- Engineering tools

Secure Communications



Meeting industry standards ensures compatibility with communications and IT equipment. Supported Network Protocols include:

- HTTPS
- SSH
- SCP
- Syslog
- SFTP
- CHAP
- RADIUS
- TACACS+

Multilin D400 Device Connections



Bay Controllers



Protection Relays



Intelligent Devices

Configuration Software

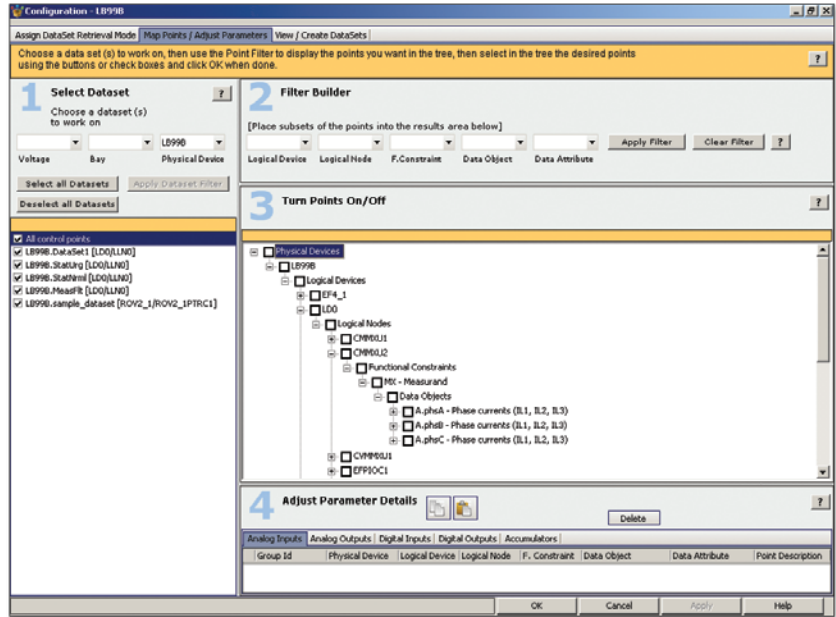
IEC 61850 Substation Device Loader

A key benefit to using IEC 61850 based communications is the reduction in deployment costs for modern substation automation systems. The D400 IEC 61850 loader application guides users through a structured 4-step workflow to configure the IEC 61850 client application, reducing system configuration time.

Available device data, based on logical nodes, can be retrieved from the IEC 61850 Substation Configuration file (SCL files such as ICD, CID, SCD) or directly from the intelligent substation device using the IEC 61850 self-description.

The IEC 61850 device loader allows users to pick the specific logical nodes or data sets to be used for automation tasks or to be placed in the D400 database for upstream communications, reducing overall network traffic and system loading for increased system efficiency.

Using the IEC 61850 Dynamic Data Sets allows the configuration software to define the exact data to be retrieved from a substation device when initializing communications with that specific device. This allows users to configure the data sets through a single application rather than manually configuring data sets in each separate device, reducing mapping errors.

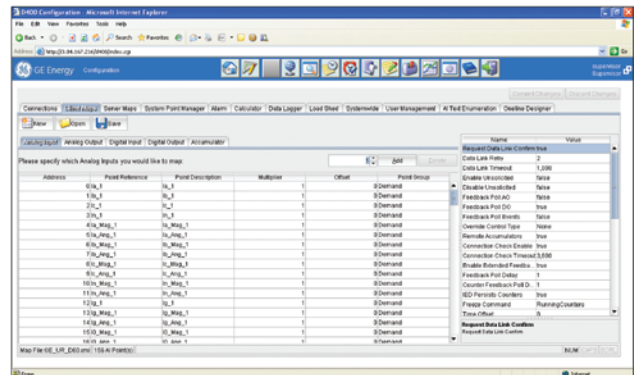
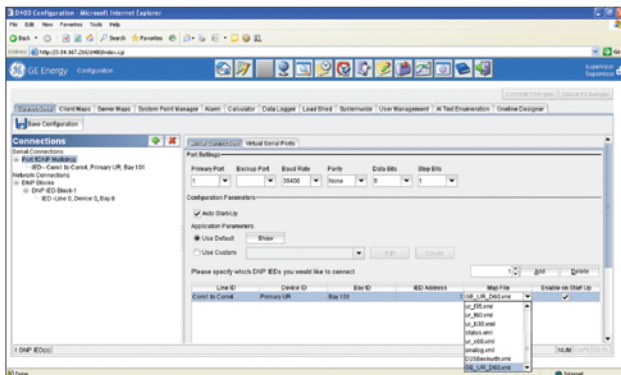


The IEC 61850 client is configured using the D400 Device loader application.

Device Configuration

Configuring the Multilin D400 to communicate with substation devices is simple and straightforward. Thanks to pre-configured map files, adding devices to the system only takes a few mouse clicks. Point maps can be customized to meet your specific needs, then applied for all devices requiring the modifications.

Creating One-Line diagrams is quick and easy using the built-in, drag and drop One-Line designer application. Configuring alarm and alarm groups is simplified using a tree view point selection tool.



Browser-based configuration: connecting and configuring substation devices is simple using pre defined drop down lists of device point maps.

Hardware Overview

The D400 is built on a flexible, high performance, expandable diskless and fan-less platform that is powered by a 1.6 GHz processor.

Two Ethernet networks are supported with separate multiport switches. An IRIG-B format time protocol input/distribution module is also supported. Isolated serial port media is selected for each pair of ports.

Redundant Power Supplies

The Multilin D400 has dual redundant, hot swappable power supplies, ensuring continuous uptime. Each power supply can be connected to a different source. As an example power supply 1 can be connected to Mains, while power supply 2 is connected to the battery system. Power Supply Health Monitoring raises a SCADA point alarm when either power supply fails. This allows an alarm to be transmitted to the EMS /OMS or DMS system, where a field personnel can be dispatched to replace the failed supply, all without service disruption.

Time Sync Support

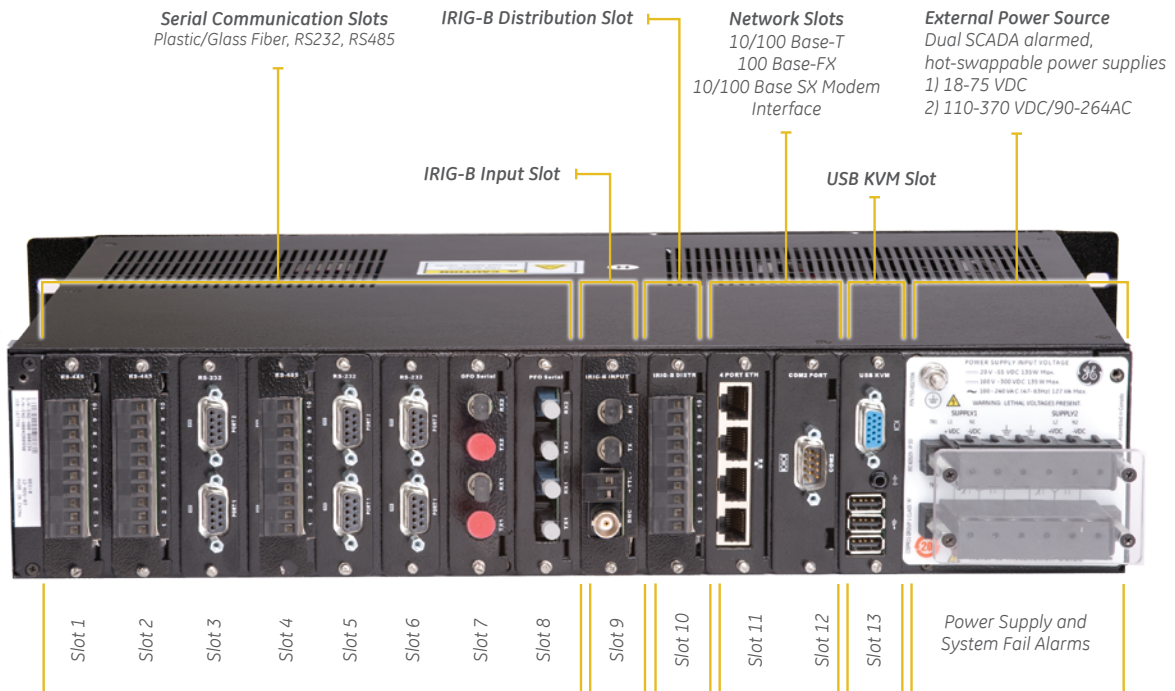
The D400 has extensive support for various time sync methodologies and will accept time sync signals from SNTP/ NTP Servers, IRIG-B (un-modulated/

modulated), and SCADA protocols. The D400 can also distribute this time sync information through its built-in IRIG-B distribution interface, SCADA protocols, and/or through the RS232 ports directly.

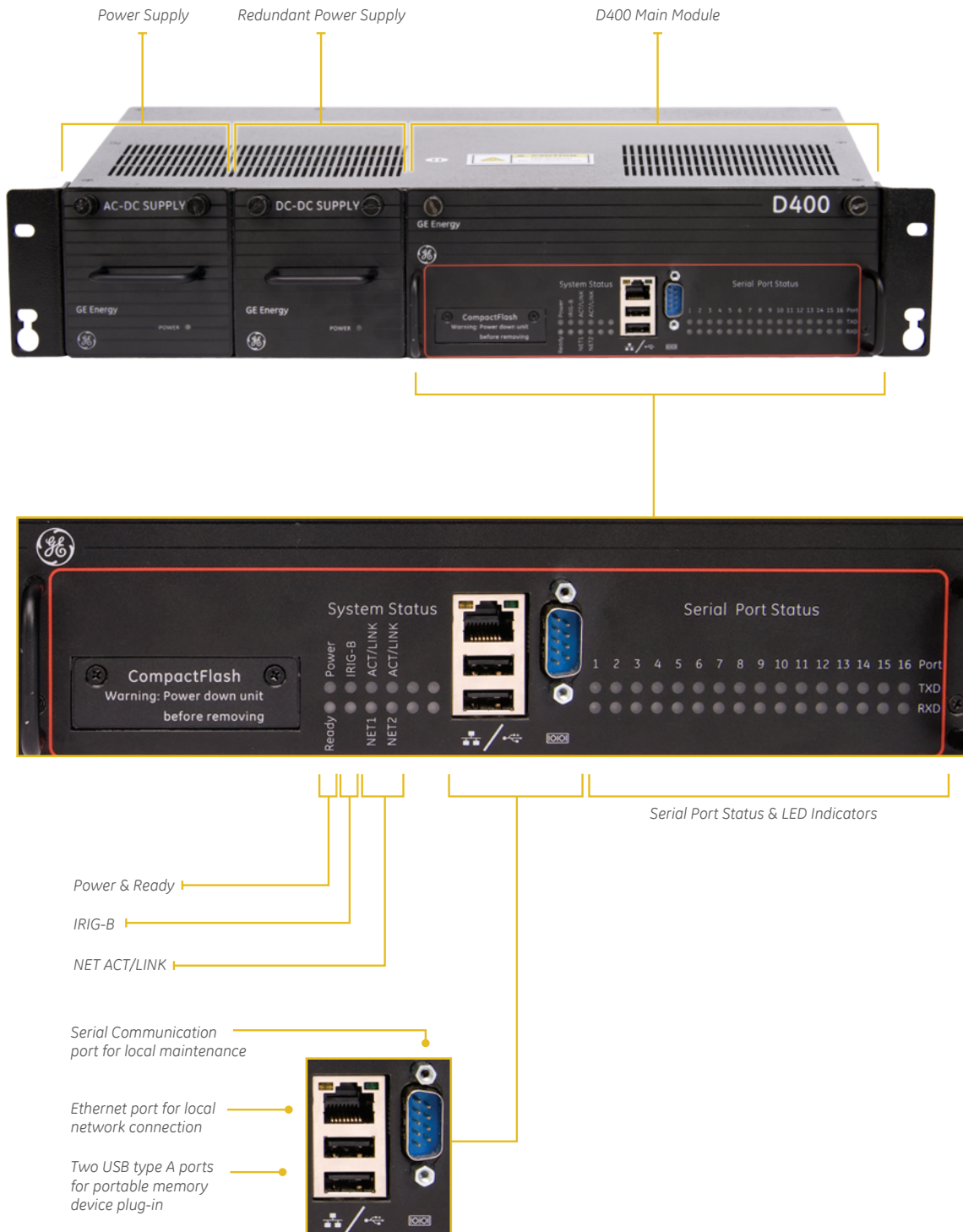


Redundant, hot-swappable power supplies.

Back Panel



Front Panel



Technical Specifications

Processor, Memory, and Storage

1.6 GHz Embedded CPU with 33 MHz PCI bus	
1.0 GB of DDR2 SDRAM	
Industrial Grade Compact Flash Module (dual - 1.0 GB, expandable to dual 16 GB)	
RTDB	10,000 SOE reports archived in an embedded SQL database 16 MB NVRAM standard for persistent event storage guaranteeing no loss of events

Communications

Ethernet – two Ethernet LAN supported (fiber and/or twisted pair)	10/100BaseT – 4 port integrated switch (isolated RJ-45 connector) 10Base-FL – redundant (fiber optic: 62.5/125 µm duplex fiber cable-ST connectors) Wireless IP radio ready (via PPP serial port) 100BASE-FX redundant (fiber optic 1300nm duplex fiber cable-ST connectors)
Serial Communications (16 channels of RS-232/485/fiber optic)	Data rate, 300 to 115.2 Kbps RS-232 <ul style="list-style-type: none"> Configurable for DCE/DTE operation Galvanic isolation between channels Can drive IRIG-B signal to RS-232 ports (with optional IRIG-B Input card present) RS-485 <ul style="list-style-type: none"> 2 Wire/4 wire support Galvanic isolation between channels Glass or plastic serial fiber port on ST connectors

IRIG-B

Input Module	TTL (un-modulated), fiber optic (un-modulated), BNC (1 kHz modulated), CPU time sync for internal database time stamping
Distribution Module	Can drive IRIG-B TTL signal for 16 Intelligent Devices
Signal Propagation	Propagated to all 16 RS-232 ports for devices such as SEL® relays Propagated to the distribution module

KVM

KVM Module	Three USB ports for connecting keyboard and mouse D-Sub 15 socket for connecting an industrial SVGA display 3.5 mm audio jack for substation alarms
------------	---

Power Supply

Input Options: 20-55 VDC (+/- 10%), 100-240 Vac/100-300 Vdc (+/- 10%), 135 Watts DC Supply, 127VA AC Supply

Physical

Dimensions	19 Inch rack mount (482.59 mm) 2U (3.47" / 88.12 mm) in height 12.24" (310.95 mm) in depth Mounting: 4 mounting holes, 2 slotted for easy installation
------------	---

Environmental

Operating Temperature: -20° to +65°C operating range
Humidity: 5-95% relative humidity, non-condensing
Ingress Protection: IP30

Maintenance Software

OCM-Offline Configuration Manager**
System Requirements: IBM® PC or compatible computer, VT100 emulator

Configuration Software

OCM-Offline Configuration Manager
LogicLinx* Editor (if using LogicLinx)**
Web Browser-Based Online Configuration

Standards and Protection

CE Mark	
2006/95/EC	LVD Directive
EN55011 (CISPR 11)	EMC Directive
EN61326	Electrical equipment for Measurement, control and laboratory use - EMC requirements

Emissions Standards

EN55011 (CISPR 11)	ISM RF Equipment - electromagnetic disturbance characteristics
IEC® 60255-25	Electromagnetic emission tests for measuring relays and protection equipment
IEC 61000-3-2	EMC-limits for harmonic current emissions (equipment input current <16A per phase)
IEC 61000-3-3	EMC limits-limitations in voltage changes, voltage fluctuations and flicker in public low-voltage supply systems, for equipment with input current <16A per phase & not subject to conditional connection

Immunity Standards

IEC 61000-4-2, IEC 60255-22-2, IEEE® C37.90.3	Electrostatic discharge (ESD) immunity test
IEC 61000-4-3, IEC 60255-22-3, IEEE C37.90.2* *(10V/m)	Radiated, radio-frequency electromagnetic field immunity test
IEC 61000-4-4, IEC 60255-22-4, IEEE C37.90.1	Electrical fast transient/burst immunity test
IEC 61000-4-5	Surge immunity test
IEC 61000-4-6	Immunity to conducted disturbances, induced by radio-frequency fields
IEC 60255-22-6	Electrical fast transient/burst immunity test
IEC 61000-4-8	Immunity to power frequency magnetic fields
IEC 61000-4-12	Oscillatory waves immunity test
IEC 60255-22-1, IEEE C37.90.1, Ontario Hydro A-28M-82	(Damped oscillatory and ringwave)

Safety Publications

IEC 61010-1	Harmonized safety standard
IEC 60255-5	Insulation coordination for measuring relays and protection equipment requirements and tests

Power Supply Standards

IEC 61000-4-11	AC power supply interruptions
IEC 61000-4-16	Immunity to conducted, common mode disturbances in the frequency range 0 Hz to 150 Hz
IEC 61000-4-17	Ripple on D.C. power supply
IEC 61000-4-29+ (+ HVDC only), IEC 60255-11	Voltage dips, short interruptions and voltage variations on D.C. input power port immunity test

Environmental Standards

IEC 60068-2-1	Environmental testing cold
IEC 60068-2-2	Environmental testing dry heat
IEC 60068-2-6, IEC 60255-21-1	Environmental testing vibration, Vibration tests (sinusoidal)
IEC 60068-2-27	Environmental testing shock
IEC 60068-2-29	Environmental testing bump
IEC 60068-2-30	Environmental damp heat cyclic (12+12 hour cycle)
IEC 60068-2-31	Environmental testing drop and topple
IEC 60255-21-2	Shock and bump tests

Communication Standards

IEC 61850-3	Substation comm. standard
IEEE 802.3	CSMA/CD access method and physical layer specifications

GE Digital Energy

North America / Worldwide

650 Markland St.
Markham, ON
Canada L6C 0M1
Toll Free (NA Only): 1-800-547-8629
Tel: 905-927-7070
Fax: 905-927-5098
email: gemultilin@ge.com

Europe / Middle East / Africa

Avenida Pinoa 10-48170
Zamudio (Vizcaya), Spain
Tel: +34 94 485 88 00
Fax: +34 94 485 88 45
email: gemultilin.euro@ge.com

Asia

No. 1 Hua Tuo Road
Zhangjiang Hi-Tech Park,
Pudong District,
Shanghai 201203, China
Tel: +8621 3877 3808
Fax: +8621 3877 7459

GEDigitalEnergy.com

RADIUS® Microsoft Active Directory is a registered trademark of the Microsoft Corporation
TACAS+® is a registered trademark of Cisco Systems, Inc.

IEC® is a registered trademark by Commission Electrotechnique Internationale.

Modbus™ is a trademark of SCHNEIDER AUTOMATION INC

SEL® is as a registered trademark by Schweitzer Engineering Laboratories, Inc.

NERC® is as a registered trademark of North American Electric Reliability Council.

IBM is a registered trademark of IBM Corporation.

GE, the GE monogram, Multilin, D400, D.20, LogicLinx and Hydran are trademarks of the General Electric Company.

GE Digital Energy reserves the right to make changes to specifications of products described at any time without notice and without obligation to notify any person of such changes.

© Copyright 2012, General Electric Company. All Rights Reserved.



imagination at work